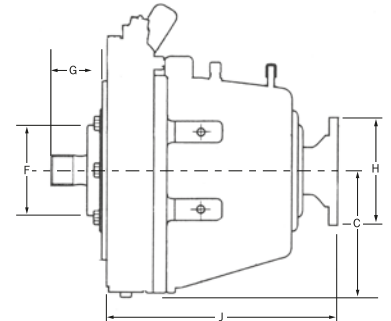
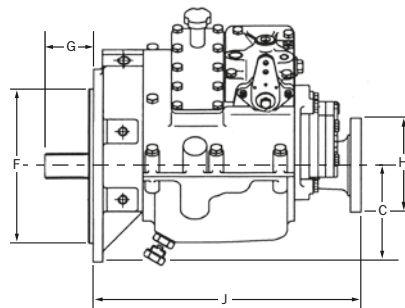
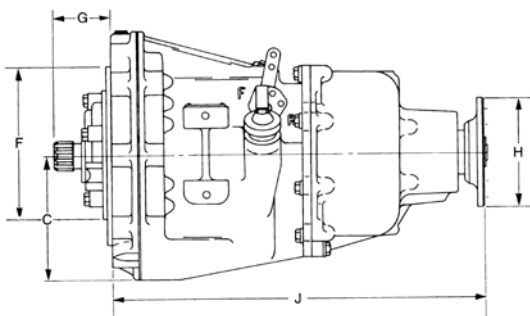


# In-line hydraulic engagement gearboxes



Make	VELVET DRIVE			PRM		ZF MARINE		
Model	71/71L <sup>④</sup>	72/72L/72LX <sup>④</sup>	72 <sup>④</sup>	260C	750C	ZF45C <sup>④</sup>	ZF63C <sup>④</sup>	301-1C <sup>④</sup>
REDUCTION RATIOS :1	1.00	1.00	(1.52)		(1.09)	1.00	1.00	(1.00)
IN FORWARD (AS ENGINE)			(1.88) <sup>③</sup>	1.96	1.94			1.24
ROTATION			2.57	2.94	[2.90]			1.41
REDUCTION RATIO <sup>①</sup> IN REVERSE			2.91					1.86
	1.00	1.10	+10%	SAME AS FORWARD		1.03	1.03	SAME AS FORWARD
Weight W Kgs	43/28	49/32	69	63	93	31	32	87
Length J mm	267	291	452	360	400	267	267	344
Depth C mm	144	144	144	117	155	145	145	200
Spigot F mm	209	209	209	209	209	209	209	SAE 1, 2, 3
Shaft G mm	65	65	65	65	65	65	65	SAE11½, 14
Flange H ins	4	5	5	5	5¾ <sup>⑤</sup>	4	5	5¾ TD
Max Diesel HP/100*	5.7/7.8	8.6/4.9/14.2 <sup>②</sup>	8.6(7.1)	3.6	(10.5)9.5[8]	7.4	9.6	19.4 (15.0)
MAX RPM	6000	6000	6000	4500	4500	5500	5500	3000
Cooler size (min)	1	2	2	2	3	1	1	2
Lubricant	ATF Dextron Made in USA			Engine Oil Made in England		ATF Dextron Made in European Community		

① Short term, low power use only, except PRM boxes which will take full power in both directions

② High power variants available, 72LH 19.0, 72LHP 26.7. Dimensions change to W=39, J=323, C=241, F+77

③ Output rotation is opposite to input

\* Pleasure boat rating

④ Also available as an integral Vee-drive, request information

⑤ If fitted with MT0530 adaptor, H=5, J=452, W=98

Installation parts available include:- Flywheel housings and adaptors, flywheel drive plates, oil coolers, shift cable connection kits, flexible couplings, shaft half couplings, C.V shafts and thrust bearings

Electric shift available (aftermarket on PRM)

**All gearboxes may be operated with single lever remote controls, and will accept propeller shaft thrust. Always fit a flexible coupling.**